

RESOLUTION NO. 3-2017

A RESOLUTION DECLARING THE EXISTENCE OF A COUNTY ROAD;
SUCH ROAD BEING SPECIFICALLY DESCRIBED BELOW:

WHEREAS the statutes of the State of Montana vest the Board of Commissioners with the authority and responsibility regarding roads and bridges, and such Statutes are generally found in Title 7, Chapter 14, Montana Code Annotated; and

WHEREAS the board is aware that a road exists in Fergus County, **Kendall town site**, known as **McKinley Avenue** which is more specifically described as follows:

A parcel of land lying in the Northeast Quarter (NE ¼), of the Southwest (SW ¼), the Southeast Quarter (SE ¼) of the Northwest (NW ¼) and Southwest Quarter (SW ¼) of the Northwest Quarter (NW ¼) of Section 32, Township 18 North, Range 18 East, Principal Meridian, Montana.

The said parcel being all of that portion of the said property contained within a strip of land 80 feet in width, being 40 feet each side of the described centerline.

Beginning at a point on centerline at PT at engineer's station 00+00.00, the said point is N.09°01'58"E., and a distance of 831.04 feet from the S-C 1/16th corner of Section 32, T. 18 N., R. 18E., P.M.M., based off an initial bearing of S.87°55'40"W., a distance of 100.26 feet, thence along an arc of a 15 degree curve right, a distance of 209.78 feet; thence N.60°36'16"W., a distance of 142.08 feet; thence along an arc of a 29 degree curve to the right, a distance of 46.19 feet; thence N.47°12'36"W., a distance of 231.37 feet; thence along an arc of a 8 degree curve to the right, a distance of 182.75 feet; thence N.32°35'25"W., a distance of 270.53 feet; thence along an arc of a 8 degree curve to the left, a distance of 145.87 feet; thence N.44°15'34"W., a distance of 1119.76 feet; thence along an arc of a 29 degree curve to the left, a distance of 90.53 feet; thence N.70°30'51"W., a distance of 210.13 feet; thence along an arc of a 18 degree curve to the right, a distance of approximately 166.79 feet

ending at a point where the road intersects the eastern boundary of the Daisy Mining Claim (MS6458) in Section 32, T. 18 N., R. 18 E., P.M.M.

The direction and measurements of the lines of this survey refer to Montana State Plane Coordinate System, NAD83 (2011) (Epoch:2010:0000) and were determined by Global Positioning System-Real Time Kinematic (GPS-RTK) methods.

WHEREAS, the Board is aware that on some portions of the foregoing described road, petitions may have been filed in the past, and as a consequence, these portions appear to have been declared as county roads. However, some portions may appear not to have been previously the subject of road petitions; and

WHEREAS, the foregoing described road has been laid out, constructed and maintained with state or county funds, and it appears that persons using such road have long been under the belief that the entire length of such road is a county road; and

WHEREAS, the 1999 Montana Legislature enacted subsections 7-14-2101 (2) (b) and (c), which allows local governments to address roads such as that described above; and such statute requires a public hearing, after which the Board has discretion to declare such to be a county road; and

WHEREAS, the Board of Commissioners, after due notice, held a public hearing on January 25th, 2017, to solicit public input as to the advisability of declaring the foregoing described road to be a county road; and after receiving such input, the Board believes that to declare such to be a county road would be in the public interest;

NOW THEREFORE BE IT RESOLVED, that pursuant to Section 2-14-2101, Montana Code Annotated, and the foregoing

described McKinley Avenue, in the Kendall town site is hereby declared to be a public road and shall hereby continue to be used by the public.

PASSED AND APPROVED this 10th day of February, 2017.

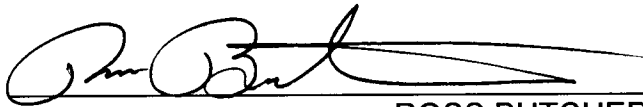
BOARD OF COMMISSIONERS:



CARL SEILSTAD



SANDRA YOUNGBAUER



ROSS BUTCHER

ATTEST:



Rana J. Wichman, Clerk & Recorder

BASIS OF SURVEY

Geodetic Control, North American Datum of 1983 (NAD83), for this survey project was established utilizing static Global Positioning System (GPS) observations post-processed by National Geodetic Survey's (NGS) Online Positioning User Service (OPUS).

GPS METADATA

Receiver	Trimble R8 GNSS
Antenna	R8 Model 2
Position Fix Mode	RTK
Office Software	Trimble TBC Version 3.40
Data Collector	Trimble TSC2
Scale Factor	0.99917
Convergence Angle	00°01'01"

BASIS OF BEARING

The direction and measurements of the lines of this Survey refer to Montana State Plane Coordinate System, NAD83(2011)(Epoch:2010:0000) and were determined by Global Positioning System Real Time Kinematic (GPS-RTK) methods.

SURVEYOR'S NOTE

The procedures and equipment used to perform and prepare this survey are accurate to ± 0.1 feet for PLSS corner ties. The centerline shown hereon is based upon ± 50 foot location stationing, of an existing road. The calculated centerline of the easement is ± 3 ft of actual centerline of the existing road being ± 20 ft in width.

R 18 E



FND CORNER ◆
SECTION LINE —
MINING CLAIM BNDY —

SEC 32 T18N, R18E P.M.M.
FERGUS COUNTY, MONTANA

SHEET 1 OF 4

Resolution 3-2017

BASIS OF SURVEY

Geodetic Control, North American Datum of 1983 (NAD83), for this survey project was established utilizing static Global Positioning System (GPS) observations post-processed by National Geodetic Survey's (NGS) Online Positioning User Service (OPUS).

GPS METADATA

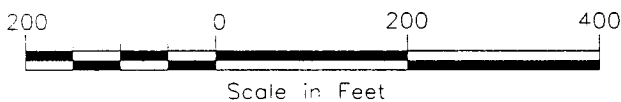
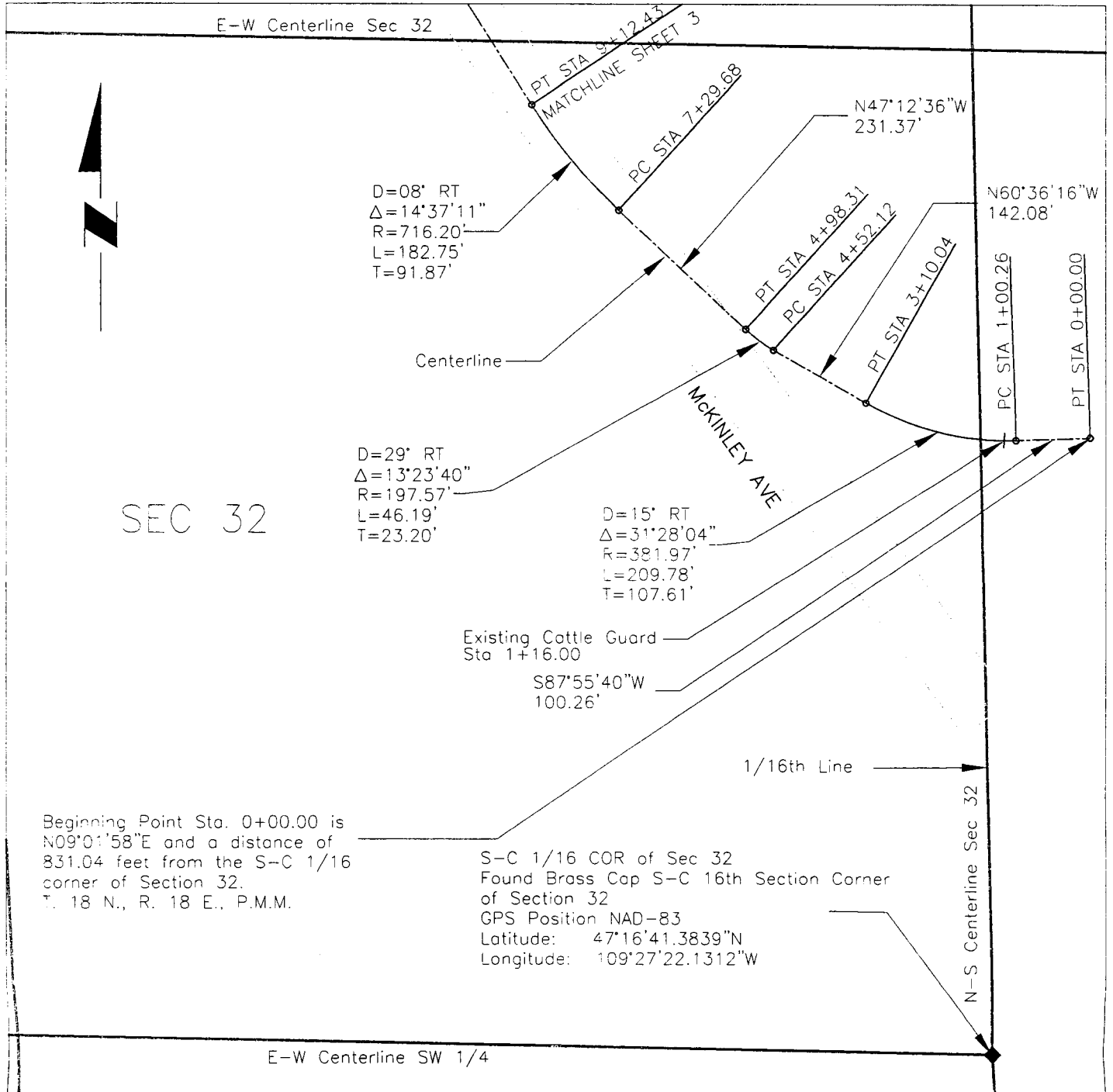
Receiver	Trimble R8 GNSS
Antenna	R8 Model 2
Position Fix Mode	RTK
Office Software	Trimble TBC Version 3.40
Data Collector	Trimble TSC2
Scale Factor	0.99917
Convergence Angle	00°01'01"

BASIS OF BEARING

The direction and measurements of the lines of this Survey refer to Montana State Plane Coordinate System, NAD83(2011)(Epoch:2010:0000) and were determined by Global Positioning System Real Time Kinematic (GPS-RTK) methods.

SURVEYOR'S NOTE

The procedures and equipment used to perform and prepare this survey are accurate to ± 0.1 feet for PLSS corner ties. The centerline shown hereon is based upon ± 50 foot location stationing, of an existing road. The calculated centerline of the easement is ± 3 ft of actual centerline of the existing road being ± 20 ft in width.



SEC 32 T18N, R18E P.M.M.
FERGUS COUNTY, MONTANA

SHEET 2 OF 4

Resolution 3-2017

BASIS OF SURVEY

Geodetic Control, North American Datum of 1983 (NAD83), for this survey project was established utilizing static Global Positioning System (GPS) observations post-processed by National Geodetic Survey's (NGS) Online Positioning User Service (OPUS).

GPS METADATA

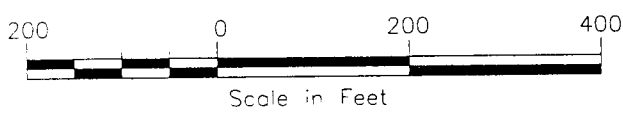
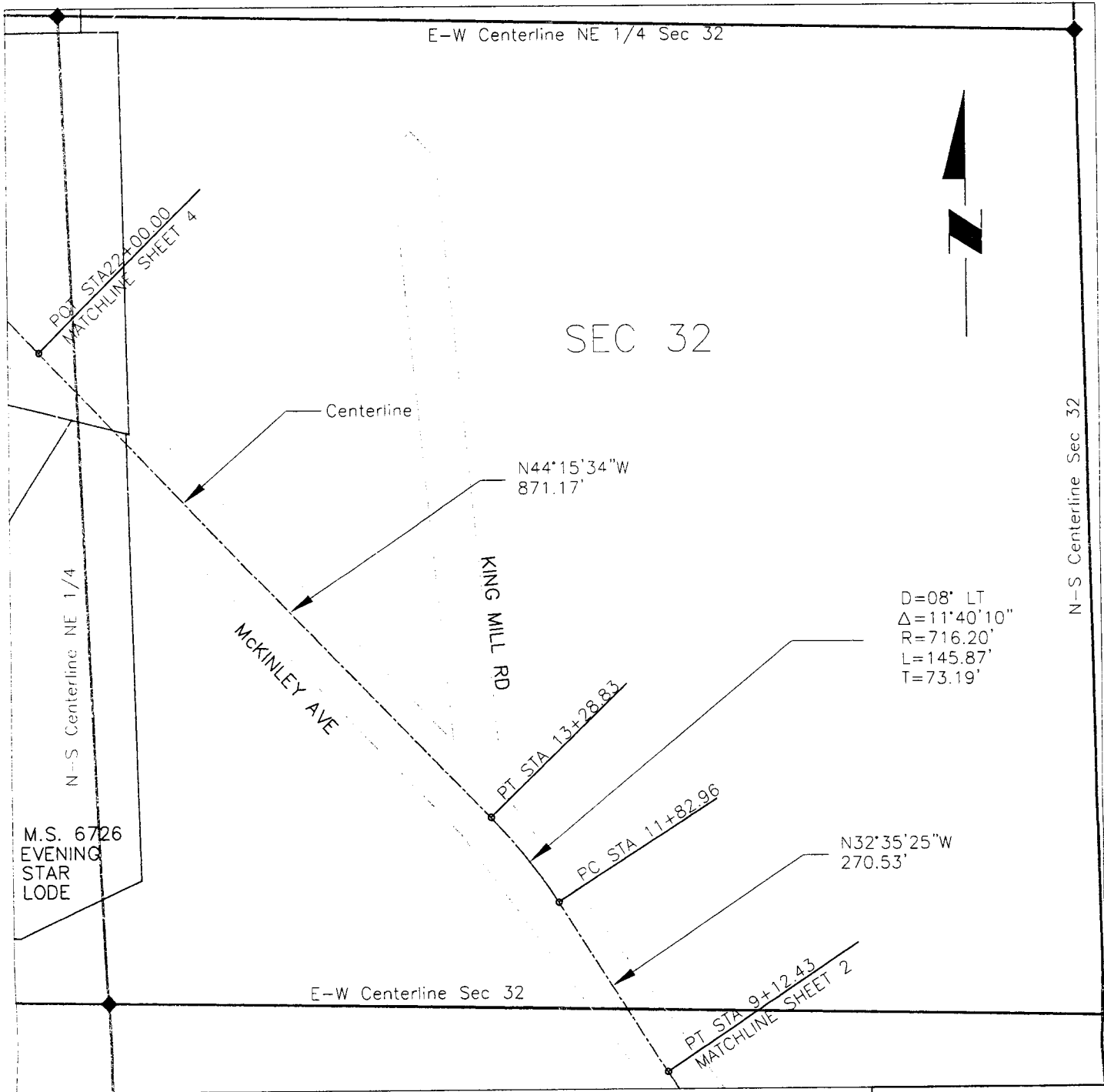
Receiver	Trimble R8 GNSS
Antenna	R8 Model 2
Position Fix Mode	RTK
Office Software	Trimble TBC Version 3.40
Data Collector	Trimble TSC2
Scale Factor	0.99917
Convergence Angle	00°01'01"

BASIS OF BEARING

The direction and measurements of the lines of this Survey refer to Montana State Plane Coordinate System, NAD83(2011)(Epoch:2010:0000) and were determined by Global Positioning System Real Time Kinematic (GPS-RTK) methods.

SURVEYOR'S NOTE

The procedures and equipment used to perform and prepare this survey are accurate to ± 0.1 feet for PLSS corner ties. The centerline shown hereon is based upon ± 50 foot location stationing, of an existing road. The calculated centerline of the easement is ± 3 ft of actual centerline of the existing road being ± 20 ft in width.



SEC 32 T18N, R18E P.M.M.
FERGUS COUNTY, MONTANA

SHEET 3 OF 4

Resolution 3-2017

BASIS OF SURVEY

Geodetic Control, North American Datum of 1983 (NAD83), for this survey project was established utilizing static Global Positioning System (GPS) observations post-processed by National Geodetic Survey's (NGS) Online Positioning User Service (OPUS).

GPS METADATA

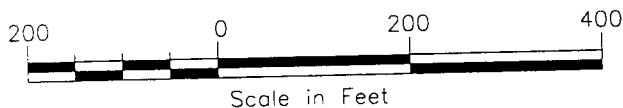
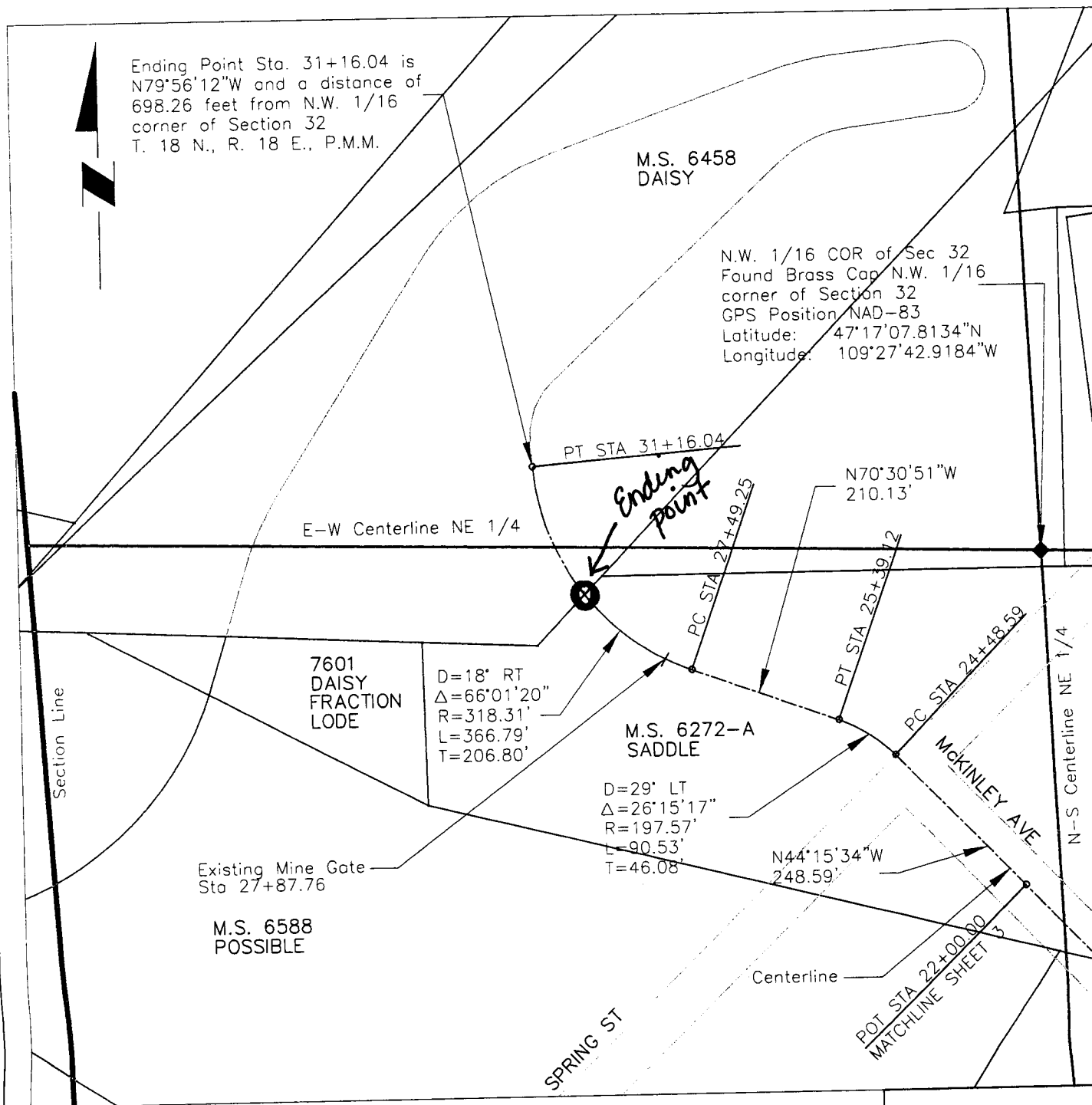
Receiver	Trimble R8 GNSS
Antenna	R8 Model 2
Position Fix Mode	RTK
Office Software	Trimble TBC Version 3.40
Data Collector	Trimble TSC2
Scale Factor	0.99917
Convergence Angle	00°01'01"

BASIS OF BEARING

The direction and measurements of the lines of this Survey refer to Montana State Plane Coordinate System, NAD83(2011)(Epoch:2010:0000) and were determined by Global Positioning System Real Time Kinematic (GPS-RTK) methods.

SURVEYOR'S NOTE

The procedures and equipment used to perform and prepare this survey are accurate to ± 0.1 feet for PLSS corner ties. The centerline shown hereon is based upon ± 50 foot location stationing, of an existing road. The calculated centerline of the easement is ± 3 ft of actual centerline of the existing road being ± 20 ft in width.



SEC 32 T18N, R18E P.M.M.
FERGUS COUNTY, MONTANA

SHEET 4 OF 4

Resolution 3-2017